

## DO-IT-YOURSELF SARGENT HEATED SEAT KIT (AC-DIYHEAT-04)

 **Important:**

Read **ALL** instructions before proceeding with installation. This product is not intended to be used in any other manner other than stated in the enclosed instructions.

### TOOLS REQUIRED:

- Marker
- Knife or scissors
- 3/8" (9mm) drill bit
- Drill
- Pliers
- Sharp metal punch, pick or awl
- Electrical tape \*optional

 **Warning:**

Do not connect this heat pad element directly to the motorcycle power source. This heat pad element has a specific resistance and construction that is designed to perform optimally with the **Sargent Heat Boss Control** power output parameters. Substitution of other non-Sargent brand components, other heat control units, or installed unregulated, will void the warranty. In addition, use of non-Sargent components, or direct wiring can result in component failure, overheating, damage to other equipment and/or injury to the user due to excessive heat.

### PARTS INCLUDED WITH THIS KIT:

#### Pkg #1

- Adhesive Heat Pad Element

Qty 1

#### Pkg #2

- Rubber Grommet
- Dual Wire Plug 30" long
- Splice taps
- 80 grit Sandpaper Sheet

Qty 1

Qty 1

Qty 2

Qty 1

#### Pkg #3

- Sargent **Heat Boss** Controller kit with instructions  
Qty 1

**NOTE:** This product requires removal and reinstallation of the seat upholstery. While removal of the upholstery and heat pad placement can be easily done with simple tools, we recommend reinstallation of the upholstery be performed by an experienced upholstery shop, as this *typically* requires special equipment including a pneumatic staple gun. **Button Fitted Seats**—If your seat has buttons, extreme caution and special consideration must be given to heat pad placement, button placement and reinstallation—professional installation is highly recommended.

### Pre-installation:

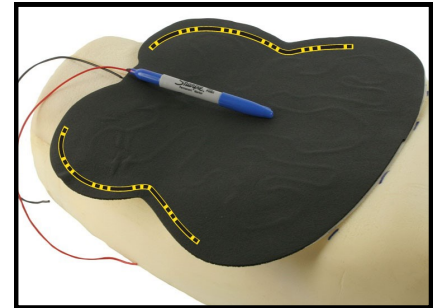
**To protect your seat from damage during installation, use a towel or other soft material on your working surface.**

1. Remove seat from motorcycle and place on protected working surface upside down. Carefully remove upholstery completely away from area to be heated and gently separate foam from the seat pan near the front of the main seating area to be heated.

**Helpful hint:** Use a small flat blade screw driver or awl (such as an ice pick) to pry the staples up and then pull them out with pliers.

### Dry Fit the Heat Pad:

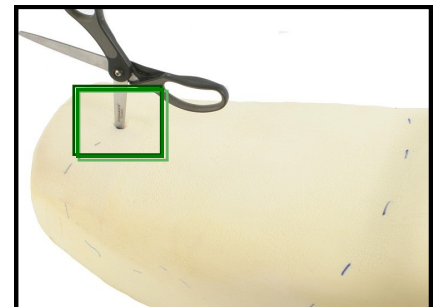
2. Notice the contour designated by the yellow dotted lines on the image (right). This contour is designed to allow the pad to better conform to the front neck and inner thigh area of motorcycle seats. Experiment with the best overall placement and fit. **DO NOT TRIM HEAT PAD.** Once the location has been determined, mark around the pad with a marker. Also mark a spot on the foam at the front edge of the pad where the wires will pass downward through the foam.



### Slit Foam for Wires:

3. At the location predetermined in **step 2**, as illustrated by the green square (right), is the location where your wires will be threaded through the foam to the seat base pan. Make a small slit through the foam with a knife or scissors at this mark (see image right).

**OPTIONAL:** For the best final aesthetics, it is sometimes helpful to sand or cut a small recess in this general area for the wire joint to lay completely flush, eliminating the appearance of a "bump" under the upholstery.

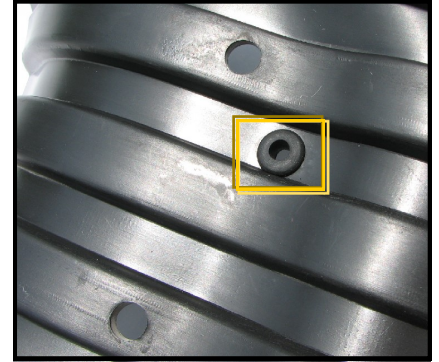


### Drill Hole in Seat Pan

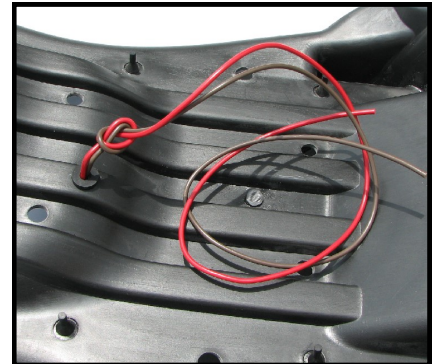
4. Choose the location on the bottom of the seat base pan best suited for the heat wire to exit the seat. This location should be toward the front of the seating area, near where the heat pad wires will exit the foam.

**Important:** Choose a location that will not allow the wires be pinched by other under-seat components or frame when the seat is installed.

5. Drill a 9mm or 3/8" hole at the yellow square location (right) and install rubber grommet included in Pkg #2.



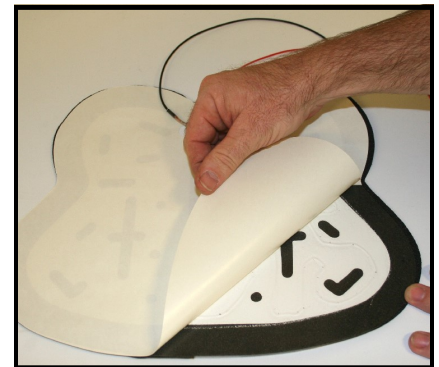
6. Thread both wires of the plug provided in Pkg #2 through the pan from the bottom so they will meet the wires for the heat pad. Tie a knot as shown on image (right) on the wires near the hole where the plug's wires exit the seat pan to prevent pulling or damage to connections once seat is re-assembled.



### Install Heat Pad

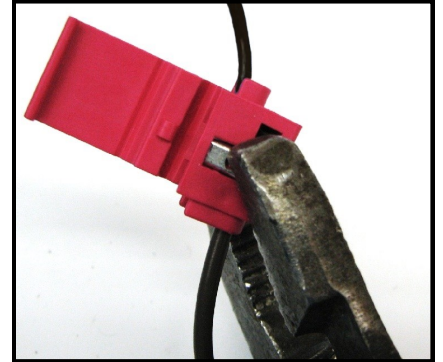
7. Install heat pad on top of the foam by peeling paper backing from the adhesive on the reverse side of the heating pad. Gently press into place to insure good adhesive contact. Thread the wires through the slit created in **step 3**.

**OPTIONAL:** On some seats and upholstery configurations, the black heat pad foam may be visible through the upholstery. If this is the case, use the included sandpaper to lightly sand the high points on the surface (caused by the heat element wire) creating a smooth top surface. Use caution not to sand all the way through to the wire element. In addition, the sand paper can be used to "blend" or "feather" the edges of the black heat pad foam to diminish visibility once the upholstery is installed.



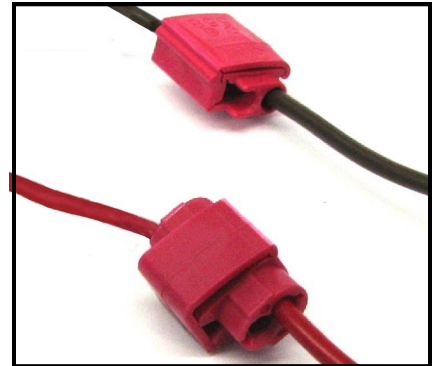
## Connect the Wires

- Using red splice taps included in Pkg #2, join the black wire of the connector plug in the pan to one of the black wires on the heat pad by inserting the end of the wires into the splice tap. Using a pair of pliers, pinch the aluminum tab on the splice tap closed to secure the wires in place and snap closed the cover to prevent shorting. Repeat this process for the red and remaining red wire. Ensure no bare wires are exposed by wrapping with electrical tape if necessary. Tuck connections and wires away from metal hardware between the seat pan and the foam.



## Test Fit

- Test fit seat on the motorcycle to ensure the wires you have installed are not being pinched when the seat is in place.



## Install Controller

- Re-install seat cover.

***Refer to Package #3, "Heated Seat Wiring Instructions" for the Sargent HEAT BOSS controller to complete the installation.***